



# Waverley Elementary School

http://waverley.vsb.bc.ca

Tel: (604) 713-4752

**Principal:**

Mr. Henry Au

**Director of Instruction:**

Ms. Magdalena Kassis

**PAC Chairperson:**

Mr. Khay See

**Official Trustee:**

Ms. Diane Turner

**April 10, 2017 - Vol. 3 No. 6**



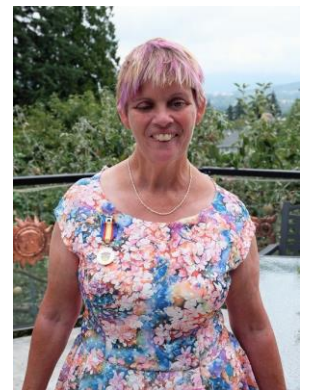
A big and warm Waverley welcome to Ms. Cleveland who joins our Resource Teacher Team for the remainder of the year. She works on Monday, Tuesday, Wednesday. As well, Mr. Masuhara who teaches Div. 15 on Mondays will be working Tuesdays in the role of Resource Teacher.

We should also extend some belated welcomes to our 'new' building staff – Mr. George Kang (AM) and Mr. Balbinder Bhatia (PM) are our school engineers. They are very experienced and highly respected having worked for many years and at various schools in the district. They have already made themselves at home at Waverley with staff and students and are working hard to keep our building and facilities in tip top shape!

## DID YOU KNOW WE HAVE A RECEIPT OF "THE BC MEDAL OF GOOD CITIZENSHIP" AMONGST US?

Vancouver School Board vision teacher Marilyn Rushton is a recipient of B.C.'s newest honour, the Medal of Good Citizenship. She received the award for her inspirational life of service to the visually impaired community, her contributions to families with blind and visually impaired children, and her energetic support for the musical community.

Ms. Rushton has been coming to Waverley, with her companion Misty (seeing-eye dog), and leading some of our students in an engaging time of music and learning. We are very fortunate to have Ms. Rushton share her joy and passion with our students and congratulate her on being honoured for her service.



The Welcome to Kindergarten program (WTK) offers resources and strategies for families in support of children and early learning.

Our school will be hosting our Welcome to Kindergarten session on **May 25<sup>th</sup> at 1:00 pm**. We look forward to seeing you on that day!

## EARTHQUAKE DRILL – MAY 4<sup>TH</sup>, 2017

Every year in May, the Vancouver Board of Education runs a district-wide Earthquake drill. This year the drill for all Vancouver schools will be held on **Thursday, May 4<sup>th</sup> at 2:00 pm**.



At 2:00 pm, all students and staff will begin the practice in their classrooms, by going under their desks and counting to 60 in unison. After the count, everyone will proceed outside to the grass field and assemble as per evacuation procedures. Once outside, we will set up our First Aid Station and Student Release Station. The Student Release Station is for coordinating the release of students to parents or guardians.



This year we invite parents/guardians to come to the school at 2:30 pm to participate in the process of student-parent **EMERGENCY REUNIFICATION**. If you wish to participate, please arrive at 2:30 pm and bring a piece of picture identification with you. The drill will end at 3:00 pm and our regular dismissal will proceed after that time.

The VSB uses the same Reunification process as most other school districts:

1. Parent/Authorized Person reports to a Check-In Desk and show personal photo identification
2. Staff confirm person picking up a student is listed with the school as an Emergency Contact of the student (please ensure that your child's Emergency Contact information is up-to-date).

Thank you for being a part of our Emergency Preparedness Drill – it will be a good opportunity to practice and learn together.

# WAVERLEY ELEMENTARY SCHOOL – APRIL 2017

MONDAY	TUESDAY	WEDNESDAY	THURSDAY	FRIDAY	IMPORTANT DATES
<b>3</b>	<b>4</b>	<b>5</b> Reel to Reel Film Festival – Div. 5 & 6 (Roundhouse Community)  Clean Up Your Act – K-3	<b>6</b> Landed Learning – Div. 10 (UBC Farm)  Immunization – K & Gr. 6  Ready, Set, Learn – 11 AM	<b>7</b>	April 14, 2017 - Good Friday (school closed) April 17, 2017 - Easter Monday (school closed) May 5, 2017 - Pro-D Day (classes not in session)
<b>10</b> BC Mobile Museum (Library)	<b>11</b> BC Mobile Museum (Library)  Vancouver Fire Department – Fire & Life Safety House visit Grade 3's	<b>12</b> PAC Hot Lunch - Sushi	<b>13</b> Science World – Div. 12, 13	<b>14</b> Good Friday (school closed)	May 19, 2017 - Sports Day (tentative) May 22, 2017 - Victoria Day (school closed) June 29, 2017 - Last day of classes
<b>17</b> Easter Monday (school closed)	<b>18</b>	<b>19</b> Bach to Beetles Performance (Main Gym)	<b>20</b> Landed Learning – Div. 10 (UBC Farm)  Gr. 7's Visit David Thompson	<b>21</b> Science World – Div. 15	June 30, 2017 - Administrative Day (classes not in session)
<b>24</b> Rollerblading @ Waverley	<b>25</b> Rollerblading @ Waverley	<b>26</b> Rollerblading @ Waverley	<b>27</b> Rollerblading @ Waverley	<b>28</b> Rollerblading @ Waverley	

# WAVERLEY ELEMENTARY SCHOOL – MAY 2017

MONDAY	TUESDAY	WEDNESDAY	THURSDAY	FRIDAY	IMPORTANT DATES
Rollerblading @ Waverley <b>1</b>	Rollerblading @ Waverley <b>2</b>	Rollerblading @ Waverley <b>3</b>	Rollerblading @ Waverley Landed Learning – Div. 10 (UBC Farm) Class & School Panorama <b>4</b>	Curriculum In-Service Day (classes not in session) <b>5</b>	May 5, 2017 - Pro-D Day (classes not in session) May 19, 2017 - Sports Day (tentative) May 22, 2017 - Victoria Day (school closed) June 29, 2017 - Last day of classes June 30, 2017 - Administrative Day (classes not in session)
<b>8</b>	<b>9</b>	<b>10</b>	Gr. 7 Camp Mtg – 5:30 pm Maker Faire – Main Gym 9 am – 3 pm 6 pm – 7 pm <b>11</b>	Lynn Canyon – Div. 15 & 16 <b>12</b>	
<b>15</b>	<b>16</b>	BC Mining – Div. 4 & 7 <b>17</b>	Landed Learning – Div. 10 (UBC Farm) <b>18</b>	Sports Day <b>19</b>	
Victoria Day (school closed) <b>22</b>	Gr. 7 Pen Pal Get Together <b>23</b>	Seymour Fish Hatchery – Div. 8 <b>24</b>	Welcome to Kindergarten – 1:00 pm – 2:30 pm <b>25</b>	<b>26</b>	
Bike to School Week <b>29</b>	Bike to School Week <b>30</b>	Bike to School Week <b>31</b>	Bike to School Week	Bike to School Week	